

UNIT REF CODE	MAX FLOW RATE (l/s)	DRAINAGE AREA (m ²)	NOMINAL OIL STORAGE (L)	SILT STORAGE CAPACITY (L)	INLET INVERT TO BASE (mm)	STANDARD PIPE SIZE O.D. (mm)
CP10FR	10.0	550	100	1,000	1,800	160 Dia

STANDARD DESIGN LOADS:

LID:

IMPOSED LOAD: 10 kN/m² UDL OR 5,850 kg WHEEL LOAD
 DEAD LOAD: UP TO 1m OVERBURDEN

HEAVY DUTY OR CUSTOM LIDS CAN BE MANUFACTURED FOR MORE ONEROUS APPLICATIONS.

TANK:

IMPOSED SURCHARGE: 10 kN/m² UDL (HA LOADING EQUIVALENT TO BS 5400-2)

NOTE: VERY LARGE POINT LOADS SUCH AS THOSE FROM CRANE OUTRIGGERS SHOULD BE AVOIDED IN THE IMMEDIATE VICINITY OF THE TANK

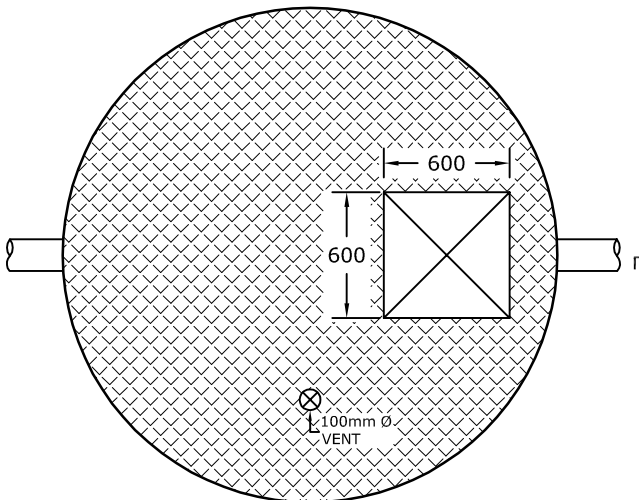
STANDARD ACCESS OPENING SIZE:

- 600mm x 600mm

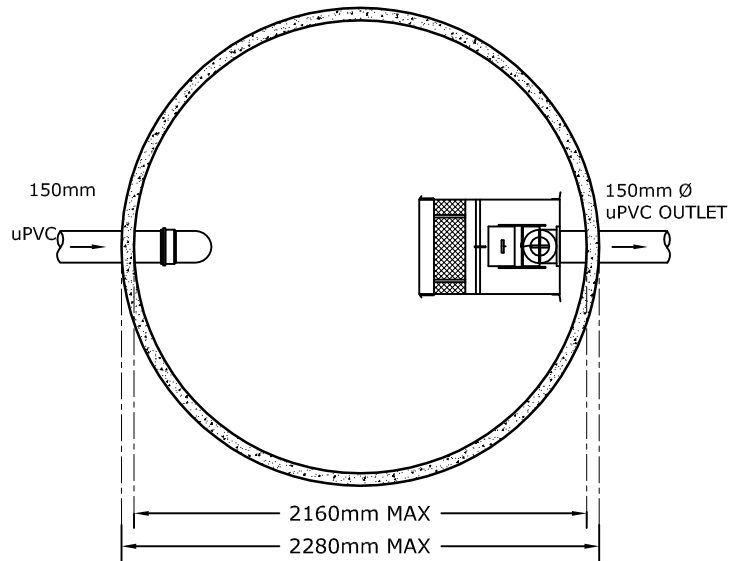
NON STANDARD SIZES ARE AVAILABLE ON REQUEST

STANDARD UNIT WEIGHTS:

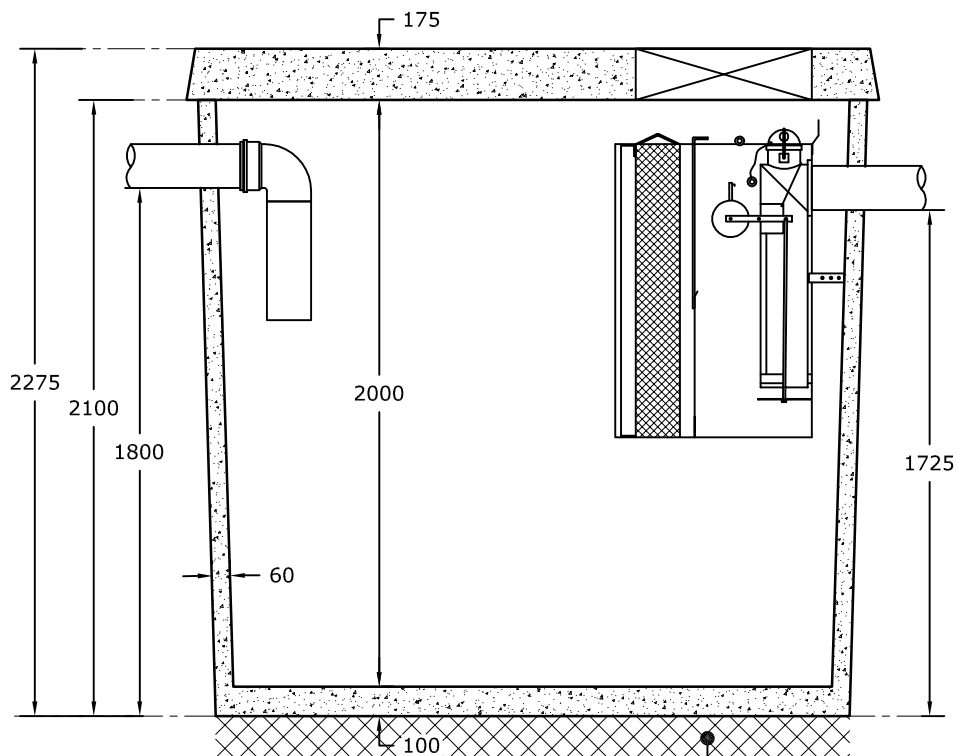
- TANK: 3.1 tonnes
 - COVER SLAB: 1.6 tonnes



ROOF PLAN:
 SCALE: 1:35



PLAN VIEW:
 SCALE: 1:35



SECTION
 SCALE: 1:25

150mm LEVEL, WELL
 COMPACTED CRUSHED
 ROCK BASE